

βathys



HYDROGRAPHIE • INSPECTION • INDUSTRIES SENSIBLES • OFFSHORE
TRAVAUX • DRAGAGE • GRAVIÈRE • GUIDAGE

HYDROGRAPHY • INSPECTION • SENSITIVE INDUSTRIES • OFFSHORE
CONSTRUCTION • DREDGING • GRAVEL PITS • TRACKING

ABOUT US

Since 2005, we have been providing solutions



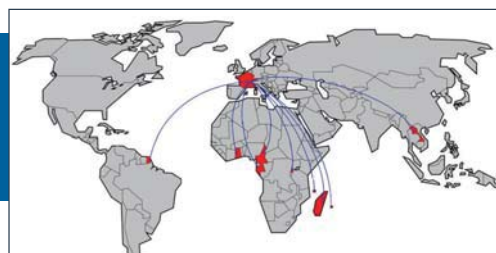
- On any project type in aquatic environment,
- For many different industries,
- In France and overseas.

Thanks to our multidisciplinary team, we propose technical and economic solutions adapted to the needs of our customers.

Major companies in the hydraulic environment have trusted us for many years.

A PRESENCE RECOGNIZED ON THE MARKET

Bathys completes more than 100 projects per year, which represents more than 260 days of survey.



SUITABLE EQUIPMENT FOR EVERY SITUATION!

Ultra-mobile bathymetric boats adapted to all situations

Bathys owns various ultra-mobile bathymetric boats adapted to all situations and a radio guided boat for hazardous or difficult to access water plans.

We deploy a complete hydrographic equipment compound of mono and multibeam echosounders, sonar and other acoustic technologies, to which is added topography precision equipment, inertial and motion units and other peripherals.

All our equipment is easily adaptable and quickly mobilized in France as well as abroad, on every type of boat and in any circumstances (galleries, polluted ponds)

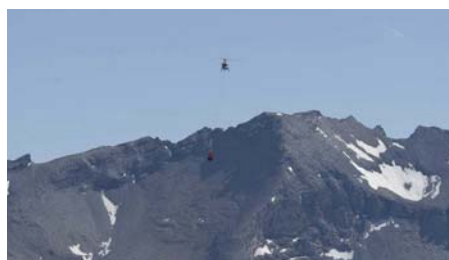
A COMPLEMENTARY AND RESPONSIVE TEAM



ENTHUSIAST

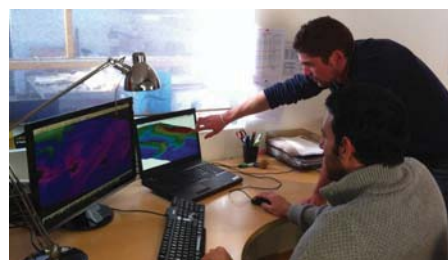
BATHYS provides qualified technicians and engineers with complementary skills

- Hydrography
- Topographer
- Civil engineering



MOBILITY

Quickly mobilized throughout France, everywhere in Europe or in the world.



AVAILABLE

Our responsiveness and availability are just part of our strengths.

LET US PROPOSE A GLOBAL SOLUTION

To answer all your aquatic environment project issues, we work complementary with a reliable partner's network.



www.bathys.fr • contact@bathys.fr

Tél : +33 (0)9 75.42.61.08 • Fax : +33 (0)8 26.42.12.94

241, Montée de Chervinges • 69400 Gleizé • France

YOUR PROJECTS - OUR SERVICES

Custom made solutions for inspection and assistance



HYDROGRAPHIC SURVEYING

All of our expertise in any circumstance

The experience of our hydrographers & topographers ensure rigorous and adapted surveys whatever the environment of intervention.

From creek to the ocean, from water intake to huge dams, open air or in tunnel environment, we are able to implement the most successful and thoroughly adapted tools.

We provide hydrographic measurements that meet international standards, a quality geo-referencing and layout edition adapted to your needs.



STRUCTURE INSPECTION

Innovative techniques for structure safety

Our skills in civil engineering associated with our know-how in hydrography and topography guarantees a suitable and reliable analysis of your installations.

We check your structures' safety with the edition of an appropriate inspection report, model detected disorders and quantify them.

Beyond traditional visual inspection systems, we provide innovative solutions for detection and measurement.



SENSITIVE INDUSTRIAL ENVIRONMENT

Bathymetry in complete safety

Because no environment must be left unsupervised, we have adapted our bathymetric technique for risky situations: industrial ponds of settlings, lagoons and other storage of discharges, follow-up of mine clearance site.

We have developed a bathymetric drone that is able to survey in dangerous zones like petrochemical and nuclear sites.

The safety of staff and your installations is our priority. We are trained and well-equipped for these situations to ensure quality interventions in the most challenging environments.



OFFSHORE

Bathymetry in the service of energy

Our human resources and equipment are available for nearshore and offshore project and infrastructure follow-up: research, oil & gas installations, marine wind energy field, hydroelectric marine turbine, submarine pipes and cable installation.

Your needs relate to our field of expertise: project studies, construction monitoring, inspection, detection and identification.

Our professionalism and autonomy will satisfy all of your requirements for availability, responsiveness, adaptability and quality.

We offer technical assistance with or without equipment, to support your team, or for a full mission in complete autonomy.

YOUR PROJECTS - OUR SERVICES

Custom made solutions for inspection and assistance



CONSTRUCTION CONTROL & FOLLOW-UP

Every construction site is a challenge...Bathys meets that challenge

Our civil engineers and technicians associated with our specialists in hydrography and topography make Bathys a single contact for the follow-up of aquatic construction works.

Whether you are a client, project manager, contracting authority or construction company, we can assist from the preparatory phases to official acceptance of work: methods of execution, definitions of controls, land and bathymetric surveys and calculations.

Flexibility and responsiveness is our priority for follow-up work.



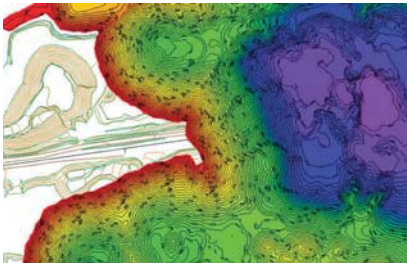
DREDGING FOLLOW-UP & CONTROL

You work under the water, we are your eyes

Dredging work assistance requires our experience in both bathymetry and construction.

We ensure reliable, accurate and independent statements for the control of your construction sites.

Regardless of your methodologies or equipment, we have adapted solutions to assist you from the preparatory phases to the final acceptance of work.



GRAVEL PITS CONTROL & FOLLOW-UP

Optimize your operation

Building on our experience in bathymetry and dredging assistance, Bathys helps you follow your production and respond to statutory and environmental constraints.

We ensure reliable, precise and independent statements for the follow-up of your operations as well as regulatory documentation.



REAL-TIME POSITIONING & TRACKING

Technology to provide quality

Faced with increasing requirements of precision and quality, the modern river or maritime works must be completed with the assistance of measurement tools, for positioning and for guiding.

Bathys provides relevant solutions that are better suited to your needs than standard market offerings.

By installing embedded systems, we satisfy the need for optimization and traceability in navigation, setting-up, dredging and the completion of work in aquatic environments.

ABOUT US

Since 2005, we have been providing solutions



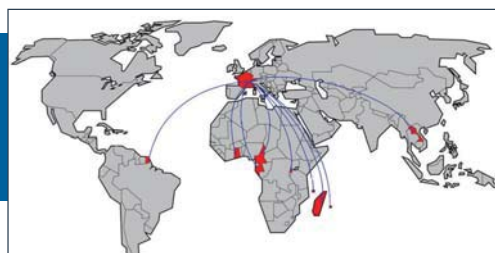
- On any project type in aquatic environment,
- For many different industries,
- In France and overseas.

Thanks to our multidisciplinary team, we propose technical and economic solutions adapted to the needs of our customers.

Major companies in the hydraulic environment have trusted us for many years.

A PRESENCE RECOGNIZED ON THE MARKET

Bathys completes more than 100 projects per year, which represents more than 260 days of survey.



SUITABLE EQUIPMENT FOR EVERY SITUATION!

Ultra-mobile bathymetric boats adapted to all situations

Bathys owns various ultra-mobile bathymetric boats adapted to all situations and a radio guided boat for hazardous or difficult to access water plans.

We deploy a complete hydrographic equipment compound of mono and multibeam echosounders, sonar and other acoustic technologies, to which is added topography precision equipment, inertial and motion units and other peripherals.

All our equipment is easily adaptable and quickly mobilized in France as well as abroad, on every type of boat and in any circumstances (galleries, polluted ponds)

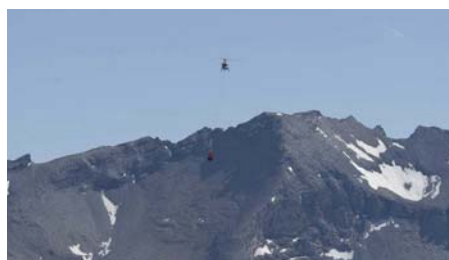
A COMPLEMENTARY AND RESPONSIVE TEAM



ENTHUSIAST

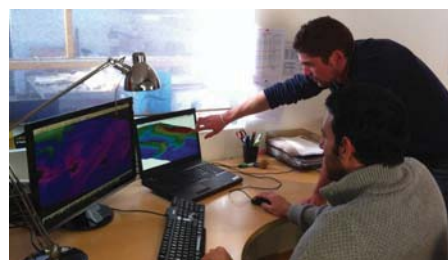
BATHYS provides qualified technicians and engineers with complementary skills

- Hydrography
- Topographer
- Civil engineering



MOBILITY

Quickly mobilized throughout France, everywhere in Europe or in the world.



AVAILABLE

Our responsiveness and availability are just part of our strengths.

LET US PROPOSE A GLOBAL SOLUTION

To answer all your aquatic environment project issues, we work complementary with a reliable partner's network.

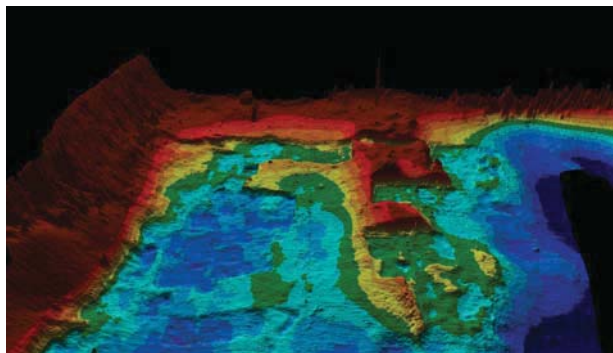


www.bathys.fr • contact@bathys.fr

Tél : +33 (0)9 75.42.61.08 • Fax : +33 (0)8 26.42.12.94
241, Montée de Chervinges • 69400 Gleizé • France

HYDROGRAPHIC SURVEYING

All of our expertise in any circumstance



The experience of our hydrographers & topographers ensures rigorous and adapted surveys whatever the environment of intervention.

From creek to the ocean, from water intake to huge dams, open air or in tunnel environment, we are able to implement the most successful and thoroughly adapted tools.

We provide hydrographic measurements that meet international standards, a quality geo-referencing and layout edition adapted to your needs.



YOUR NEEDS

For your studies and projects, you wish to discover or monitor the water bed evolution, draw up a basic or detailed mapping :

- Offshore or coastal surveys, shore or beach monitoring, water restraint or lakes mapping, lagoon and settling pond surveys
- Shallow rivers or lakes, banks mapping as a supplement to the bathymetry
- Facies identification
- Evaluation of sediment thicknesses
- Object searching: shipwreck, anchor, pipe, submerged structures

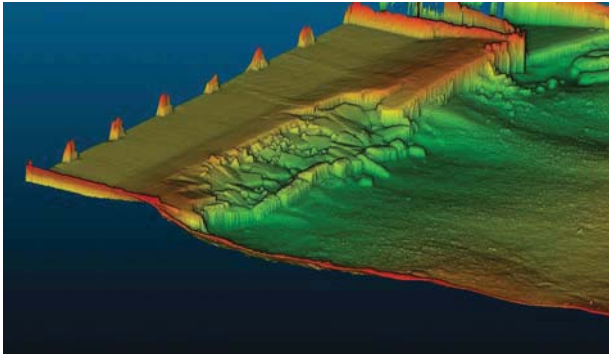
OUR SOLUTIONS

Our equipment and skills allow us to satisfy any needs with the use of advanced technology :

- Bathymetry
- Topography
- Sonar

STRUCTURE INSPECTION

Innovative techniques for structure safety



Our skills in civil engineering associated with our know-how in hydrography and topography guarantees a suitable and reliable analysis of your installations.

We check your structures' safety with the edition of an appropriate inspection report, model detected disorders and quantify them.

Beyond traditional visual inspection systems, we provide innovative solutions for detection and measurement.

YOUR NEEDS

You need to assess, identify or check the absence of defects on your hydraulic structures:

- Dam operators: downstream bed inspection, cofferdam groove inspection, water flow blockage, surface structure control, water intake railings control
- Harbor operators: wharf, dike, seawall, piles
- Navigation: control of banks and locks
- Transport: bridge piers control and aquatic retaining structures
- Community: every type of hydraulic substructure

OUR SOLUTIONS

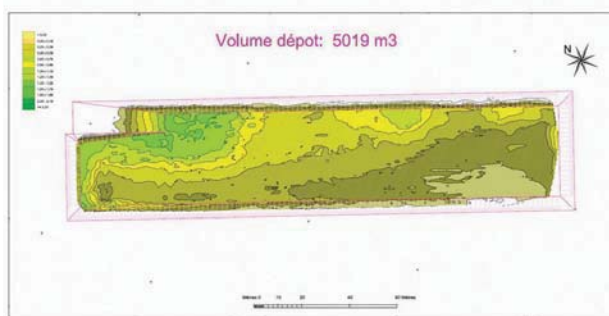
In addition to classical tools of underwater inspection, we provide you the use of advanced technologies adapted to your needs:

- Acoustic Imaging
- Underwater Scanner
- Topography of precision
- Diver Assistance



SENSITIVE INDUSTRIAL ENVIRONMENT

Bathymetry in complete safety



Because no environment must be left unsupervised, we have adapted our bathymetric technique for risky situations: industrial ponds of settlings, lagoons and other storage of discharges, follow-up of mine clearance site.

We have developed a bathymetric drone that is able to survey in dangerous zones like petrochemical and nuclear sites.

The safety of staff and your installations is our priority. We are trained and well-equipped for these situations in order to ensure quality interventions in the most challenging environments.

YOUR NEEDS

To plan your operation of dredging or cleaning out, to quantify your rejections, you wish to follow the evolution and quantify your emissions, in your lagoons and ponds of settlings:

- Bathymetric survey and mapping
- Thickness assumption and volumes of sediments
- Calculations of the useful capacity

Preparation of a mine clearance site requires, beside the detection and the positioning of the explosive objects:

- Survey and mapping of the objects
- Geo-referencing and classification
- Evaluation of the necessary dredging

OUR SOLUTIONS

Our experience, equipment and skills allow us to meet your requirements in terms of:

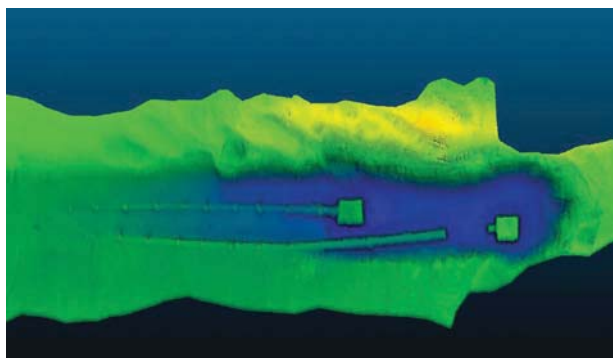
- Bathymetry
- Topography
- Magnetometry
- Sediment thickness measurement

in order to ensure:

- Sedimentary monitoring
- Identification
- Modeling
- Calculation

OFFSHORE

Bathymetry in the service of energy



Our human resources and equipment are available for near-shore and offshore project and infrastructure follow-up: research, oil & gas installations, marine wind energy field, hydroelectric marine turbine, submarine pipes and cables installation.

Your needs relate to our field of expertise: project studies, construction monitoring, inspection, detection and identification.

Our professionalism and autonomy will satisfy all of your requirements for availability, responsiveness, adaptability and quality.

We offer technical assistance with or without equipment, to support your team, or for a full mission in complete autonomy.

YOUR NEEDS

Our expertise allows us to provide surveys and inspection campaigns adapted to your projects:

- Hydrographic & topographic surveys
- Bedrock identification and sediment thickness measurements
- Objects search: books, pipes, cables
- Structures inspection: wharf, foundation

But also adapted for the follow-up of your works:

- Construction works assistance: foundations, piles, wharf, sea wall
- Dredging and burying assistance
- Conveying assistance and positioning setting-out in real time

OUR SOLUTIONS

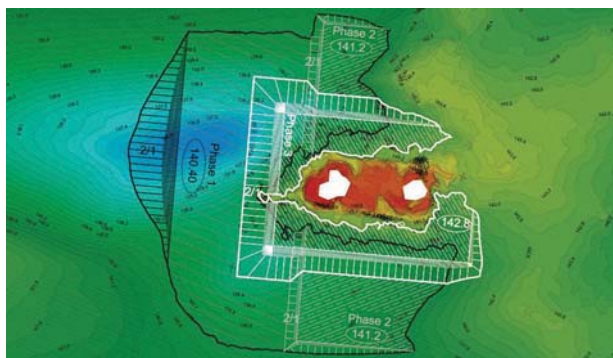
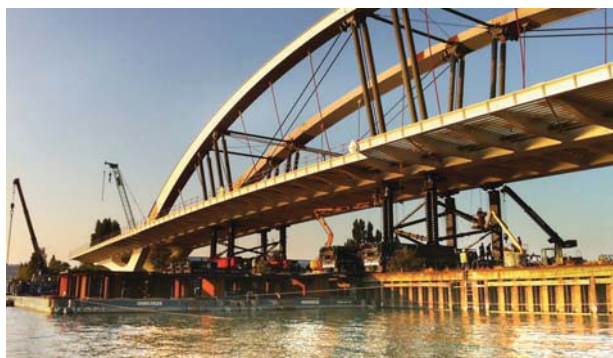
We can quickly deploy our knowledge, skills and equipment throughout the world to meet your needs of data collection and inspection: echosounder, acoustic imaging and sonar, scanner submarine, divers support.

The collected data will be processed, analyzed and interpreted in the course of the mission by the team in place.

This information can be used in the monitoring of your construction works, assembly, dredging or conveying.

CONSTRUCTION CONTROL & FOLLOW-UP

Every construction site is a challenge...Bathys meets that challenge



Our civil engineers and technicians associated with our specialists in hydrography and topography make Bathys a single contact for the follow-up of aquatic construction works.

Whether you are a client, project manager, contracting authority or construction company, we can assist you from the preparatory phases to official acceptance of work: methods of execution, definitions of controls, land and bathymetric surveys and calculations.

Flexibility and responsiveness is our priority for follow-up work.

YOUR NEEDS

You wish to delegate all or part of the control and follow-up of your project, Bathys is at your disposal for missions on request, specific or global project follow up:

- Project management assistance
- Construction assistance : foundations, bridge piers , wharves, jetties, breakwaters
- Convoying assistance: check of drafts, obstacles control
- Implementation: structures, markers, piles, setting-up of work structures, marine beacons
- Development of working and control methodologies
- Quantification of the completed work

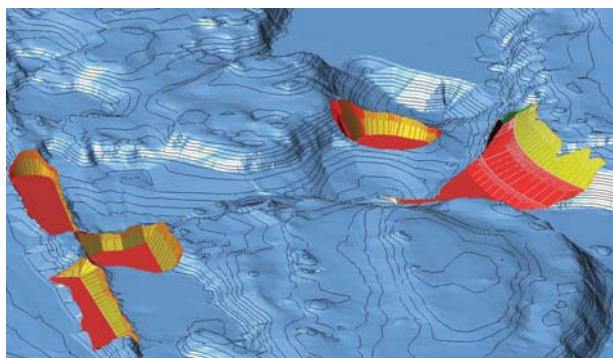
OUR SOLUTIONS

Bathys provides solutions and assistance for the success of your construction sites:

- Initial current situation or official acceptance of work: bathymetry, topography, visual inspection
- Rock filling and construction template definition
- Setting-up of the work
- Control of progress and measurement of work
- Quantitative & qualitative calculations
- Real time positioning assistance: pontoon pusher, mechanic shovel, dredge
- Real time display of the underwater work

DREDGING FOLLOW-UP & CONTROL

You work under the water, we are your eyes



Dredging work assistance requires our experience in both bathymetry and construction.

We ensure reliable, accurate and independent statements for the control of your construction sites.

Regardless of your methodologies or equipment, we have adapted solutions to assist you from the preparatory phases to the final acceptance of work.

YOUR NEEDS

You wish to delegate all or part of the control or the follow-up of your dredging work sites, Bathys is at your disposal for missions adapted to your requirements:

- Project management and contracting authority assistance
- Dredging assistance: port dredging, waterways, dams
- Clearing out assistance: removal of obstruction, removing of blockage
- Convoying assistance: verification of drafts, check of obstacles
- Definition of work and control methodologies
- Quantification of the realized works

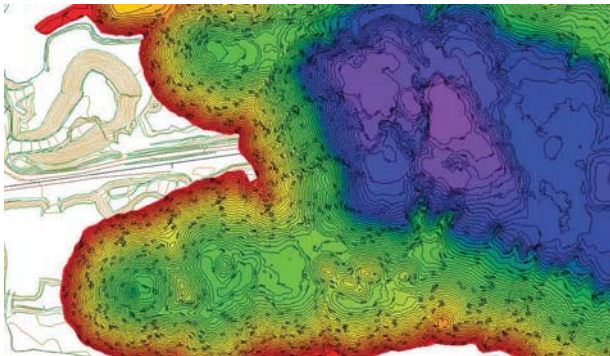
OUR SOLUTIONS

Bathys provides assistance and solutions for all of your dredging projects:

- Initial or final situation: bathymetry and topography
- Dredging area identification
- Dredging templates definition
- Dredging volume calculations
- Control of progress and situation of works
- Slope and bank stability controls
- Real time positioning assistance: dredge, pontoon, pusher, mechanic shovel

GRAVEL PITS CONTROL & FOLLOW-UP

Optimize your operation



Building on our experience in bathymetry and dredging assistance, Bathys helps you follow your production and to respond to statutory and environmental constraints.

We ensure you reliable, precise and independent statements for the follow-up of your operations as well as regulatory documentation.

YOUR NEEDS

You wish to optimize and manage production with respect to regulatory requirements:

- Insure maximum extraction
- Enhance reliability of your extraction volume
- Quantify the exploitable and exploited volumes
- Control the stability of banks or the sub-river banks
- Produce statutory statement of the current situations
- Assist convoy operations
- Define methodologies of work and control.

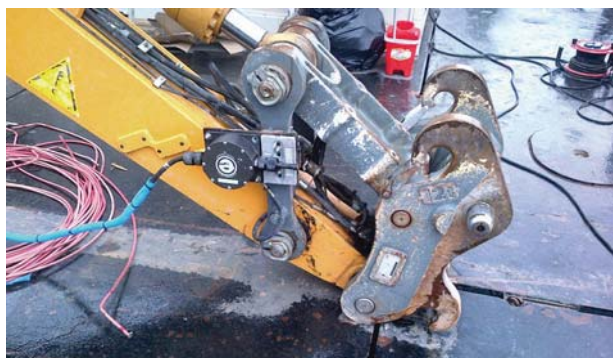
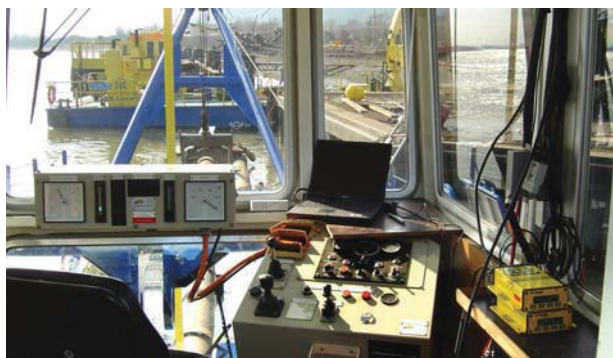
OUR SOLUTIONS

Bathys provides assistance and solutions for proper follow-up of your operation regardless of size or extraction method:

- Bathymetric and topographic survey for exploited area and also for area in preparation
- Slopes and banks surveys
- Surveys of stocks
- Periodic current situation inventory
- Calculations extraction volumes (extraction, fill and deposits)
- Real-time positioning: dredge, pontoon, pusher, mechanic shovel

REAL-TIME POSITIONING & TRACKING

Technology to provide quality



Faced with increasing requirements of precision and quality, the modern river or maritime works must be completed with the assistance of measurement tools for positioning and guiding.

Bathys provides relevant solutions that are better suited to your needs than standard market offerings.

By installing embedded systems, we satisfy the need for optimization and traceability in navigation, setting-up, dredging and the completion of work in aquatic environments.

YOUR NEEDS

You run equipment for river or maritime works, dredging equipment or transport fleets, Bathys is at your disposal to meet your positioning needs:

- Navigation assistance
- Real time workshops positioning
- Real time visualization of the working or cutting tool
- Traceability of the movements and efficiencies
- Turn-key installation
- Systems training
- Support, assistance and repair

OUR SOLUTIONS

Our expertise allows us to provide a specific study of your needs, the on-site equipment installation, user training and support during the operation :

- 2D or 3D positioning systems installation
- Bathymetric systems installation
- Installation of diverse sensors
- Customization of display and monitoring systems
- Recordings of exploitation data
- Reactive hotline & troubleshooting assistance on-site or off-site



β athys

www.bathys.fr • contact@bathys.fr

Tél : +33 (0)9 75.42.61.08 • Fax : +33 (0)8 26.42.12.94

241, Montée de Chervinges • 69400 Gleizé • France